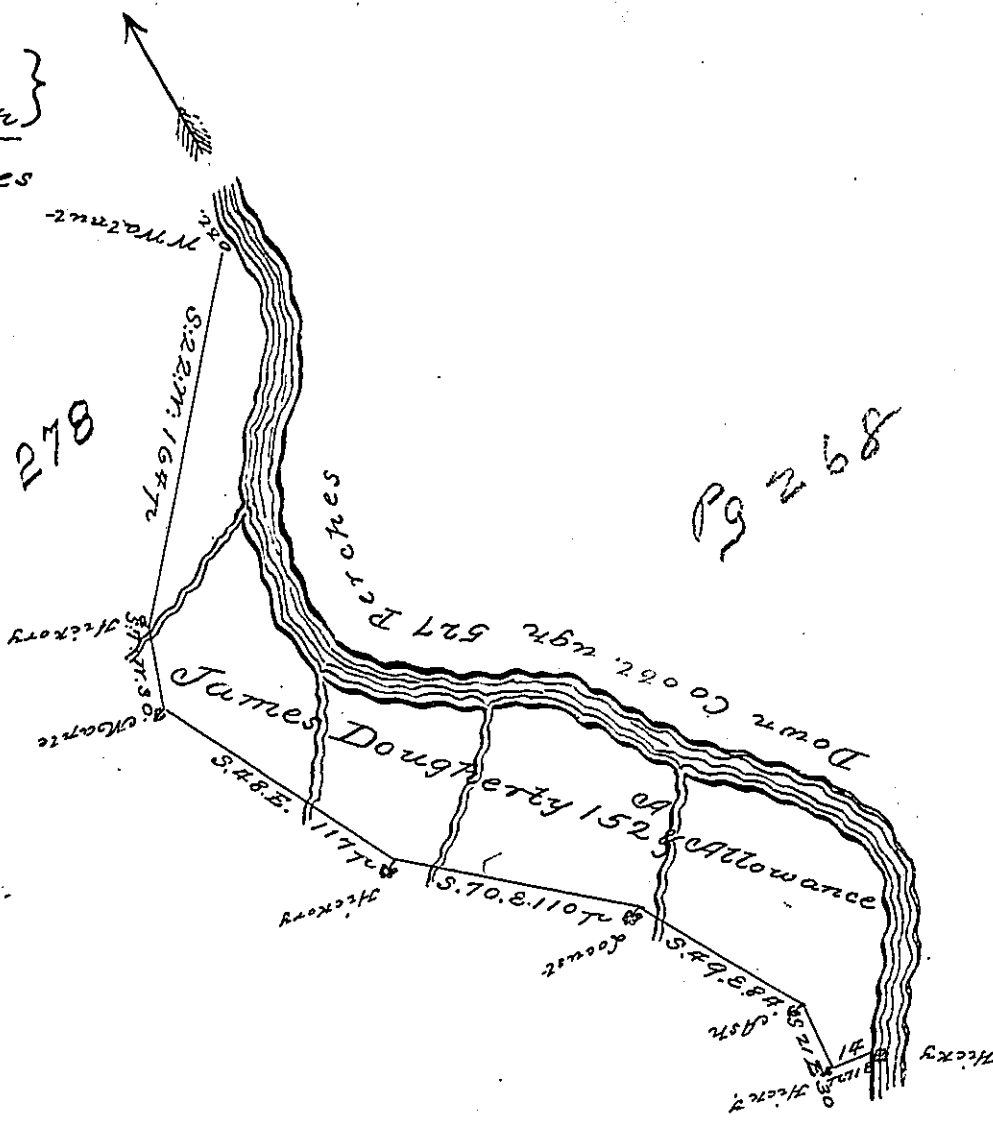


Courses & Dist.
 Down Conemough
 1 N 15 E 68 Perches
 2 N 20 W 30
 3 N 53 W 32
 082. N 66 W 58
 5 N 50 W 46
 6 N 69 W 16
 7 N 86 W 32
 8 N 67 W 60
 9 N 15 W 70
 10 N 16 E 78
 11 N 11 W 37
 527



A Draught of a Tract of Land called the long Bottom situate on the West side of Conemough Creek about half a mile below Conemough Old Town, ^{which is} at the mouth of Little Conemough; on the opposite side of the River in Brothers obliterated in the County of Bedford containing one hundred and fifty 082. Acres and the usual allowance of six p cent. for Roads &c Surveyed the 12 day of May 1770 in pursuance of an Order No: 2909 Dated the 4th Day of April 1769 for James Dougherty

To John Lukens Esqr. } by Thomas Smith & S
 082.

IN TESTIMONY that the above is a copy of the original remaining on file in the Department of Internal Affairs of Pennsylvania, made conformably to an Act of Assembly approved the 16th day of February, 1833, I have hereunto set my Hand and caused the Seal of said Department to be affixed at Harrisburg, this

second day of March 1897

James W. Latta
 Secretary of Internal Affairs.